

SINGAPORE

Flatler Homes

Art and Soul

Get creative with your interior makeover
through a curated mix of objets d'art





174

Forever Summer

SBP Homes and Pembroke & Ives teamed up to create this bright and restful getaway in the Hamptons

154



154

Into the Blues

Katharine Pooley crafts a luxurious townhouse in Notting Hill with serene hues and tailor-made details



164

SANCTUARIES

146 Cultural Centre

Architology Interiors creates a cocooning haven filled with artworks by Asian talents

154 Ode to Elegance

Bespoke furnishings and a restful colour palette contribute to this abode's enchanting look

164 For All Seasons

A Moscow house that maximises its natural views while providing a cosy sanctuary for the family

174 Rise and Shine

This light-filled holiday home is the perfect backdrop for a couple's dynamic art collection

Ode to Elegance



This London townhouse by Katharine Pooley features an enchanting blend of bespoke details and jewel tones

By Karen Tee.

Photography by James McDonald





Clockwise from left: The sprightly orange tones of the furnishings, art and accent pieces visually connect the living and dining areas; the living room looks out to the hydrangea and lavender filled garden and terrace, which features lacquered outdoor furniture from American brand McKinnon and Harris

Previous spread: The elegant white facade of the abode; hand-painted trompe l'oeil wallpaper panels echo the use of blue tones in the drawing room

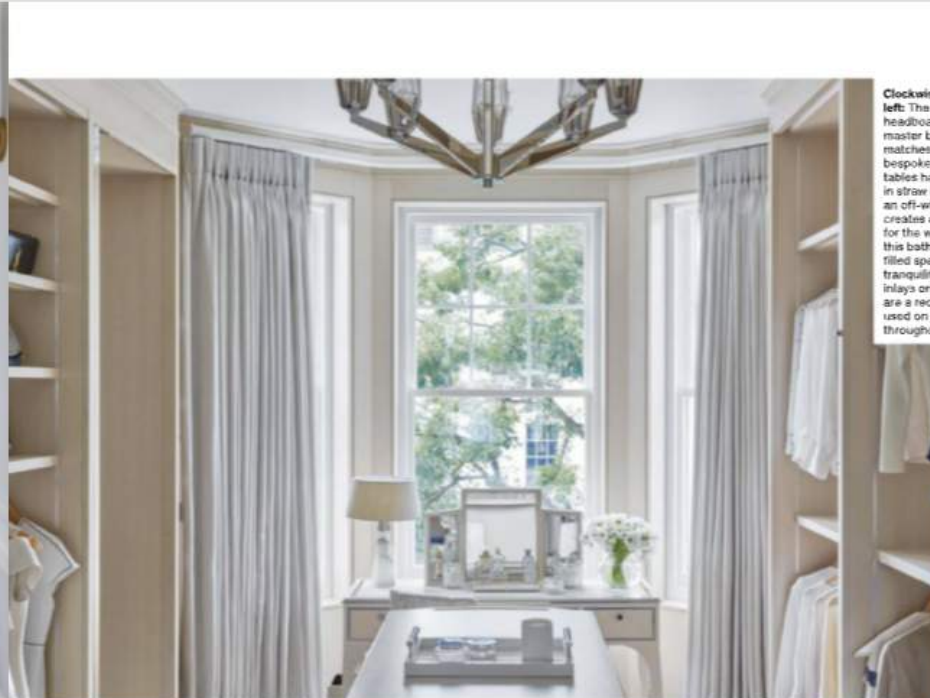


The stately exterior of this Notting Hill townhouse surely has many passers-by wondering about its grand interiors. Truth be told, what lies within might exceed even the most exacting of expectations. Owned by a jet-setting professional couple who live here with their two dogs, this luxurious 17,000sqft abode spans seven floors overlooking leafy private gardens. Its decor was entrusted to renowned interior designer Katharine Pooley, named British Designer of the Decade at the International Design and Architecture Awards in 2019.

Pooley immediately knew this would be a project like no other. "This property was very much a blank canvas with tremendous potential to become a remarkable work of art," says the designer, whose team completed the project in an impressive five months. "The rooms—large, light, and airy, with elegant period detailing—were predominantly white, and this seemed the perfect backdrop for a dramatic transformation. The building is undeniably beautiful, it just needed some personality drawn out of it."

CREATIVE DIALOGUE

Regular discussions with the owners helped Pooley solidify her creative concept. For instance, the husband's appreciation for cutting-edge contemporary styles, which is rooted in his love of automotive design, inspired her to commission notable work from leading British ateliers, makers and artists for the home. According to Pooley, the joinery is exceptional; she engaged top English artisans such as Halstock, Silverlining and Interior-id to work on custom cabinetry for the townhouse.



Clockwise from far left: The statement headboard in the master bedroom matches with the bespoke bedside tables handcrafted in straw marquetry; an off-white palette creates a refined look for the walk-in closet; this bathroom is a light-filled space of utmost tranquility; the metal inlays on this wardrobe are a recurring element used on joinery throughout the home



designed the space to ensure the client can seamlessly impress his guests."

PAINTERLY PALETTE

Pooley playfully calls the seven rooms in the home her "rainbow palette", as she used a different jewel hue in each room to differentiate the spaces from one another; these range from cobalt blue and canary yellow to amethyst purple and emerald green. She paid careful attention to the cobalt blue-hued master bedroom to create a picture of refined elegance.

"My ambition was to create a seamless and elegant design narrative across the entire master bedroom suite," explains Pooley. "The large, airy space is the perfect backdrop for a statement headboard, intricately handcrafted bespoke bedside tables with straw marquetry and suede inlays, and large statement paintings and sculptures for the art-loving client."

Spanning an entire floor of the townhouse, the master suite incorporates a marble-clad bathroom as well as his and hers dressing rooms. Adds the designer: "The overall effect is of a private and cocooning retreat: peaceful, comfortable, and undeniably luxurious."



HIDDEN REALM

The subterranean games room is a delightful surprise. With a malachite-and-bronze bar, bespoke poker table with a hand-stitched leather top, full-sized billiards table as well as an eucalyptus-and-brass ping-pong table—all of which incorporate monogrammed detailing—this is a grown-up's wonderland.

Interestingly, the crown jewel of this room is hidden behind another treasure, a pointillist cityscape painted by Australian artist David Hinchliffe. All it takes is the touch of a button to slide the painting away, revealing a carport where the owner can showcase his beloved collection of automobiles.

Pooley also reflected the couple's love of Japanese culture and art in various elements of the interior design. For instance, she used linear furniture shapes and carefully placed sculptural accessories throughout the home to create a visual sense of balance and flow. And to subtly reference the understated stylistic beauty of the Land of the Rising Sun, she added motifs such as bonsai-inspired plaster panelling to the staircase, cherry blossom detailing in the lift panels and the owners' Japanese artworks in the spa.

The result, say the owners, can be summed up in two words: "Simply outstanding".



This page: The entertainment den is a grown-up wonderland connected to the basement garage; this bronze and malachite bar is a glamorous zone where the couple entertains family and friends

Opposite page: The basement lounge looks out to the subterranean pool, which features two life-sized sculptures by British artist Nicki Taylor; fish motifs add a touch of whimsy to the bronze feature wall



“The overall effect is of a private and cocooning retreat: peaceful, comfortable, and undeniably luxurious”